



“Remember there’s no such thing as a small act of kindness.
Every act creates a ripple with no logical end.” – Scott Adams

MENTAL HEALTH SUPPORT



- **Employee Assistance Program (EAP)**

- Toll-free number gives you direct, 24/7 access to a licensed counselor, who will answer your questions and, if needed, refer you to a counselor or other resources
- Call: [833.306.0103](tel:833.306.0103) Website: eap.ufl.edu
- In addition, the State of Florida PPO and HMO as well as GatorCare insurance provide mental health benefits

- **Resilient Gator**

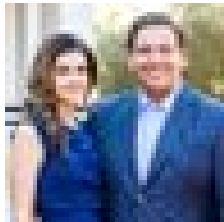
- Designed to inform and empower the campus community to build resilience coping skills. Request an in-person presentation (group) or access online for on-demand viewing (individual)
- Website: wellness.hr.ufl.edu/initiatives/programs/resilient-gator/ Email: hrs-wellness@ufl.edu

- **UF Mindfulness**

- UF Mindfulness: Interdisciplinary group of researchers and staff offering weekly programs and resources
- Website: mindfulness.ufl.edu

- **Wellness Library**

- Recorded webinars and presentations given by experts from UF and UF Health on a variety of topics including mental health
- Website: wellness.hr.ufl.edu/resources/wellness-library/



Ron DeSantis

@GovRonDeSantis



I'm pleased to announce that beginning this Monday, March 29, all Floridians age 40 and older will be eligible to receive the COVID-19 vaccine. Beginning the following Monday, April 5, all Floridians age 18 and older will be eligible. pic.twitter.com/gJ0HHmilNW

3/25/21, 9:05 AM

Travel reminder and updates!

Leadership: “Faculty can travel without restrictions now -- only must be approved by dean.
Organizing a local meeting is a different matter that is subject to our events policy.
Craig Hill maintains that policy.”

Tuesday, Craig Hill got this info following the detailed direction from the Medical Guidance Working Group:

“Right now there are conversations going on about distancing and other precautions but there are no changes in the works yet. Given that, the only response I can give right now is that faculty can go ahead with planning for in-person conferences but the 6 foot social distancing rule is still in place. We don’t know when that will change or what the new distancing would be if it changes. Those who are planning for conferences can have a second plan in place with reduced social distancing in case it changes, but there’s no guarantee right now that it will.”

- An optional narrative section has been added to UF's tenure & promotion submission system for faculty who wish to share specific justifications or explanations for any pandemic-related interruptions in work or productivity which could ultimately affect one's promotion opportunities or timeline.

USEFUL T&P LINKS

All applications for promotion, tenure, and/or permanent status at the University of Florida will be processed in the Online Promotion and Tenure (OPT) System.

2021-2022 Promotion and Tenure Information:

- [Promotion & Tenure Guidelines for 2020-2021.](#)
- [Promotion & Tenure COVID Impact Statement Guidance for Faculty](#)
- The 2021-22 Application template will be available around April 15th in MYUFL. Web Browser should be set to allow pop-ups.
 - Log onto MYUFL
 - Go to Main Menu >My Self Service >Faculty Promotion and Tenure >UF Faculty Promotion and Tenure >Promotion and Tenure Packet > Packet Template with Activity.
 - *The Template will open as a Word file, with some sections auto-populated with the candidate's information.*

Distributed at the Board of Trustees (03-18-21)

OVERVIEW OF UF-FACULTY ACCOMPLISHMENTS - (12-04-20 to 03-18-21)

The list is by no means comprehensive as it was created through voluntary contributions. Notably, these accomplishments are indicative of the research, teaching, and service done by UF faculty even in this pandemic.

Prepared by:

- Stephanie Bogart (CLAS Faculty Council Chair),
- Aida A. Hozic (CLAS Assembly Chair),
- Diana Joyce Beaulieu (College of Education Faculty Policy Council Chair)

UF to Amend Campus Master Plan for McCarty Woods

The University of Florida's senior administration has made the decision to remove McCarty Woods from current consideration for development in the Campus Master Plan 2020-2030. In the future, UF leadership will provide more details regarding how the university will move forward, including further study of the various uses for McCarty Woods that would most benefit the university community and may be incorporated into future campus master plan updates.

UF

The University of Florida Faculty Senate
presents

Nancy E. Dowd

Distinguished Professor

David H. Levin Chair in Family Law

Fredric G. Levin College of Law

Radical *Brown*: A Mandate for Systemic Comprehensive Educational Equality.



April 8, 2021 at 3 p.m.

Via Zoom:

<https://ufl.zoom.us/j/94374717745?pwd=ZjljNTFZLUHQxRWZVMHJzMjdqZ0J5Zz09>

To learn more about Distinguished Professor Dowd:

<https://www.law.ufl.edu/faculty/nancy-e-dowd>



Department of Psychiatry
College of Medicine



“Microaggressions and Overcoming Prejudice in the Workplace”



Ranna Parekh, MD, MPH

*American College of Cardiology
Chief Diversity and Inclusion Officer
Office of the CEO*

Friday, April 9, 2021

12:00-1:00pm

[Live Stream Presentation](#)

At the conclusion of this activity, participants should be able to:

1. Recognize microaggressions and its various forms.
2. Demonstrate health and mental health consequences of microaggressions.
3. Utilize strategies to address microaggressions.
4. Create an inclusive workplace environment.





Avoiding Predatory Publishers

Predatory = Fraudulent publishing practices

Top Five Things to Remember

1. Quality of publication and reasonable cost are separate considerations.
2. Be vigilant as an author, reviewer, editor and presenter. Invest time to confirm legitimacy of where you share your expertise.
3. No single list or tool is sufficient to confirm publisher's claims. Verify:
 - Editorial Board expertise reflects scope of journal
 - Any publishing fees are transparent ahead of submission
 - Ethical practices for quality content, e.g. peer review, retraction policies
 - Publication is registered and indexed. Be aware of mimicry in name and url.
4. Contact your subject specialist librarian for help
5. Watch Navigating Questionable Publishing Practices (17 min; Jan 2020)

Avoid Predatory Publishers



Choose the right journal for your research

<https://thinkchecksubmit.org/>

For more information, visit

<https://guides.uflib.ufl.edu/predatorypublishing>

Avoid Predatory Conferences



<https://thinkcheckattend.org/>